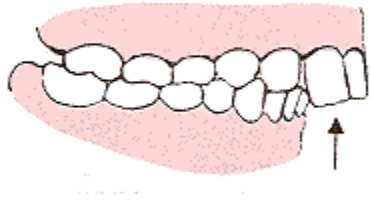
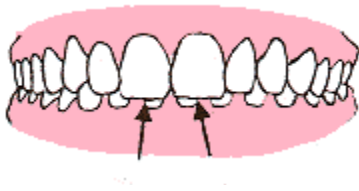


SIX Warning Signs In 7-Year-Olds



1. **Do the upper teeth PROTRUDE?** Excessive protrusion of the upper front teeth - 'buck teeth' is by far the most common orthodontic problem.



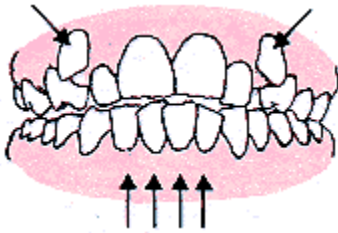
2. **Is there a DEEP BITE?** The upper front teeth cover the lower front teeth too much.



3. **Is there an UNDERBITE?** The upper teeth fit inside the arch of the lower teeth.

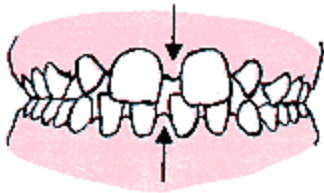


4. Is there an OPEN BITE? The child can stick his or her tongue between the upper and lower teeth when the back teeth are together.

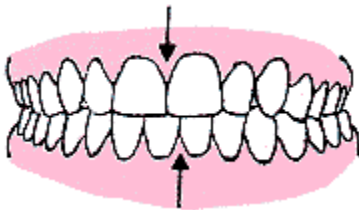


5. How is SPACING between the teeth?

CROWDED or overlapped teeth



... or noticeably large gaps between teeth.



6. Do the midlines line up? The spaces between the two upper front teeth and the two lower front teeth should line up with each other and both should line up with the bridge of the nose. When they do not, the probable cause is drifted teeth or a shifted lower jaw, resulting in an improper bite.

When to Seek Earlier Treatment

There are also some behaviors indicative of bite problems that can occur much earlier than age seven. They warrant an orthodontic exam as soon as possible. These include:

Difficulty chewing

Open mouth breathing

Thumb or finger sucking

Overlapping or crowding of erupting permanent teeth

Jaws that click or pop

Obvious abnormal bite of any kind